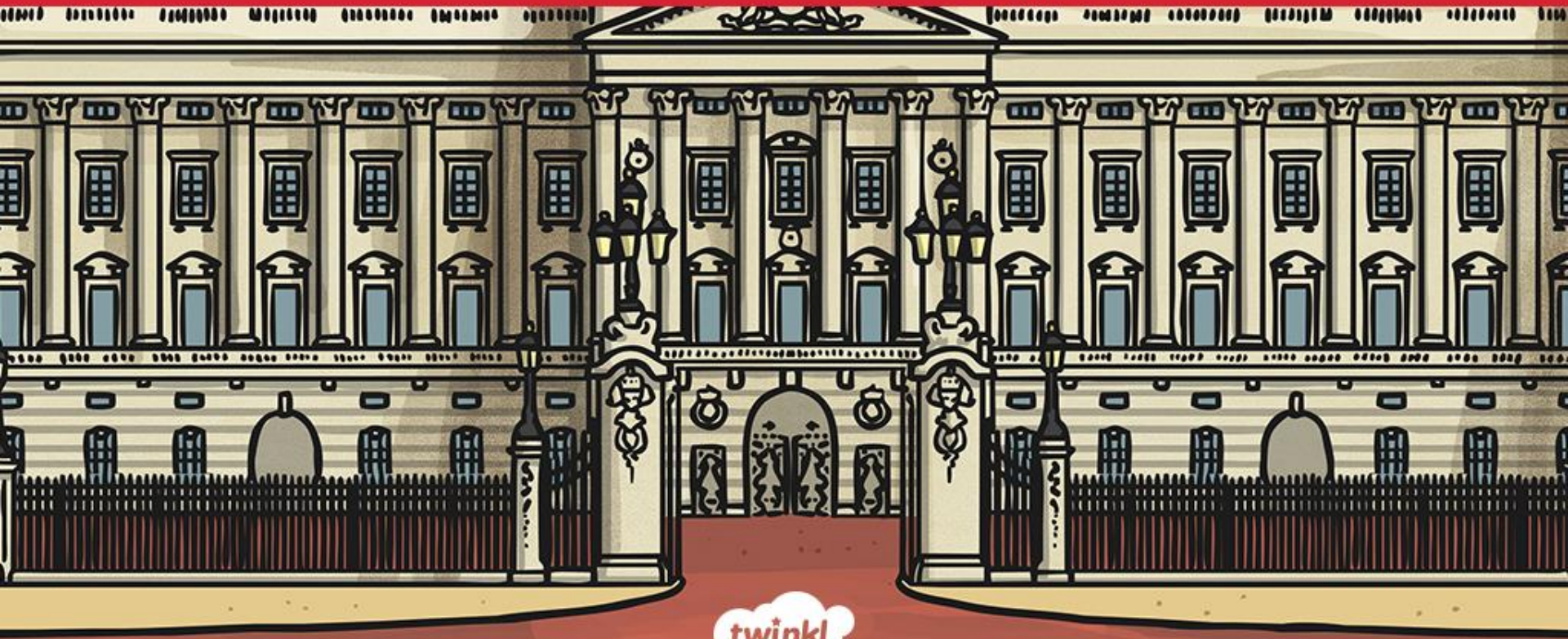


United Kingdom

An informative Powerpoint



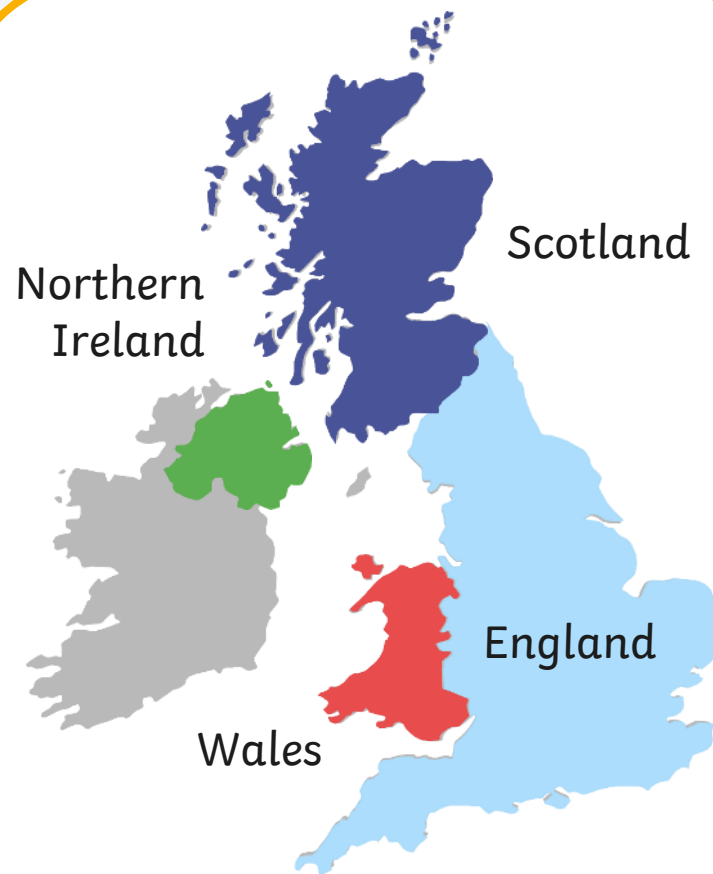
twinkl

WALT: Identify Human and Physical characteristics of countries and cities in the UK

Success Criteria

- I understand the key features of human and physical characteristics.
- I can name and locate the four countries in the UK.
- I can identify physical and human features about the four countries which are part of the United Kingdom.

What Are The Four Countries Of The United Kingdom?



Think, pair,
share your ideas.

Click to see
each country.

What Are The Physical And Human Features?

Physical Features

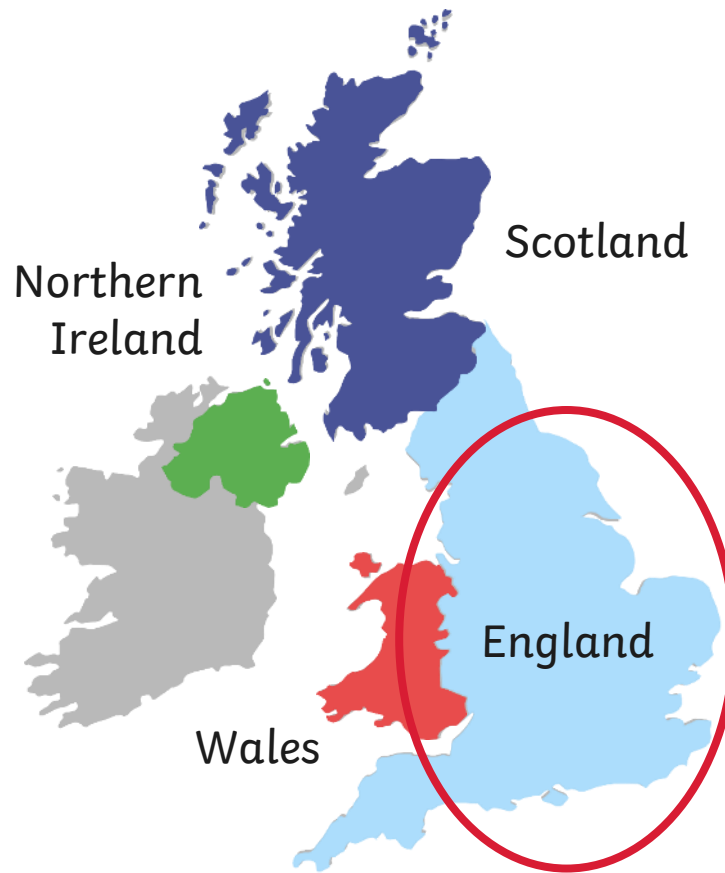
describe the natural environment of a place.



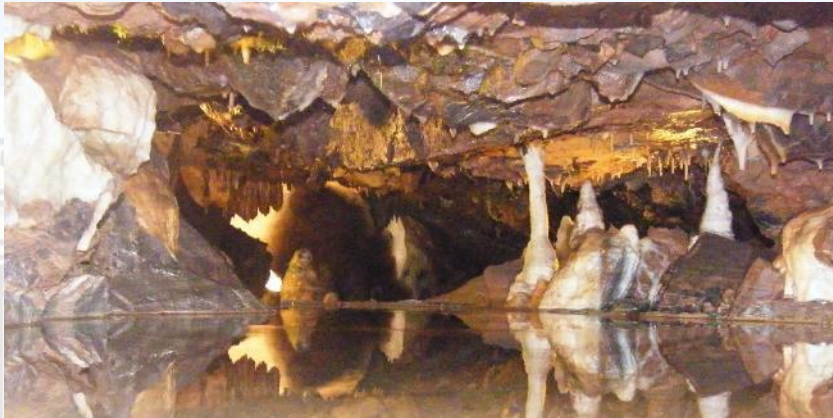
Human Features

are ways in which people have made changes to the land. For example, a motorway, statue or pier are features built by humans which have altered the way it looks.

England



Physical Features



Cheddar Gorge
Britain's biggest
Gorge with
dramatic cliffs
and caves and
caverns.

White Cliffs of Dover

Cliffs that form part
of England's
coastline. The cliffs
contain chalk and
streaks of dark flint.



Human Features

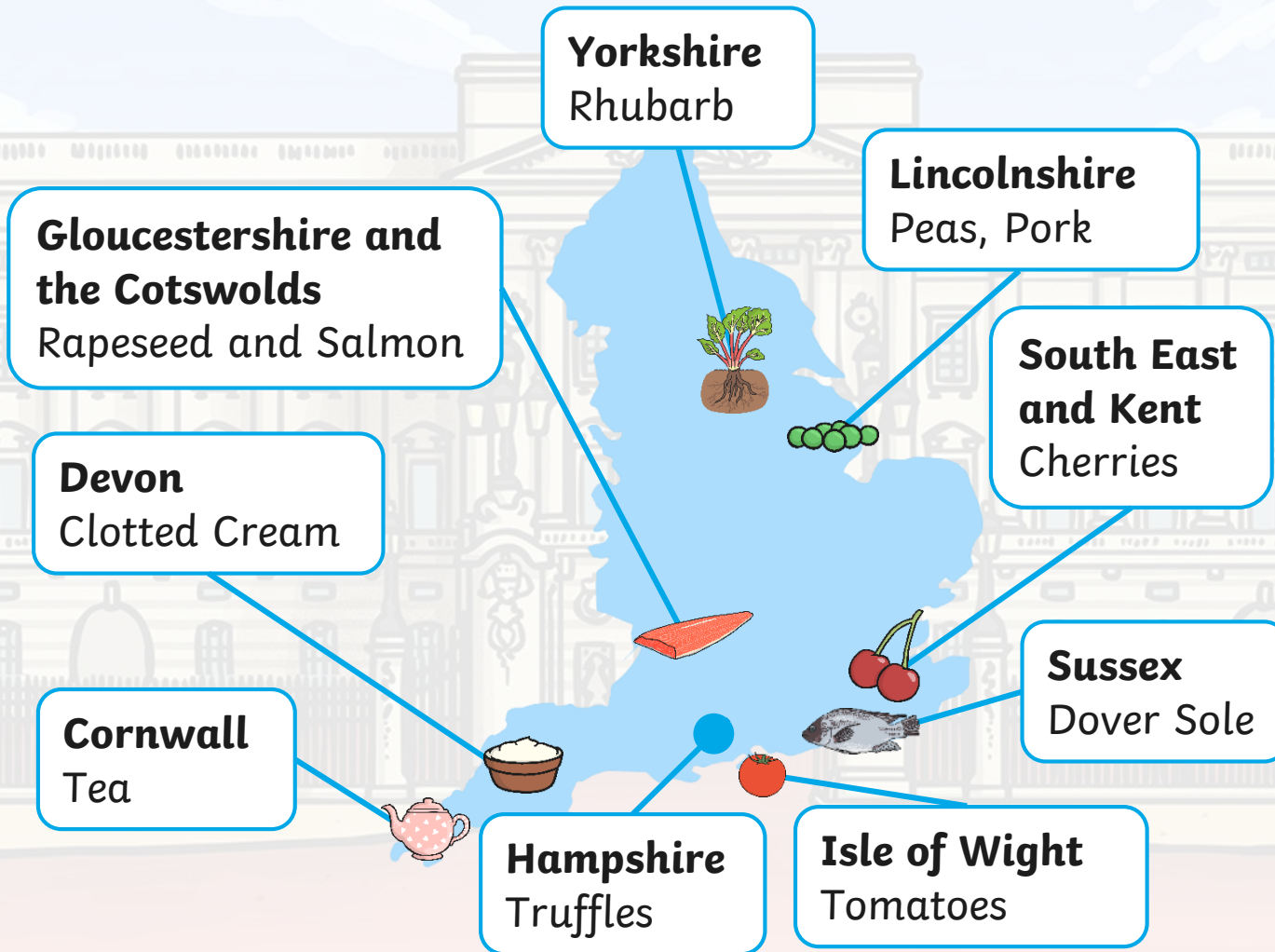


**Windsor
Castle**
Kings and
Queens have
lived here.

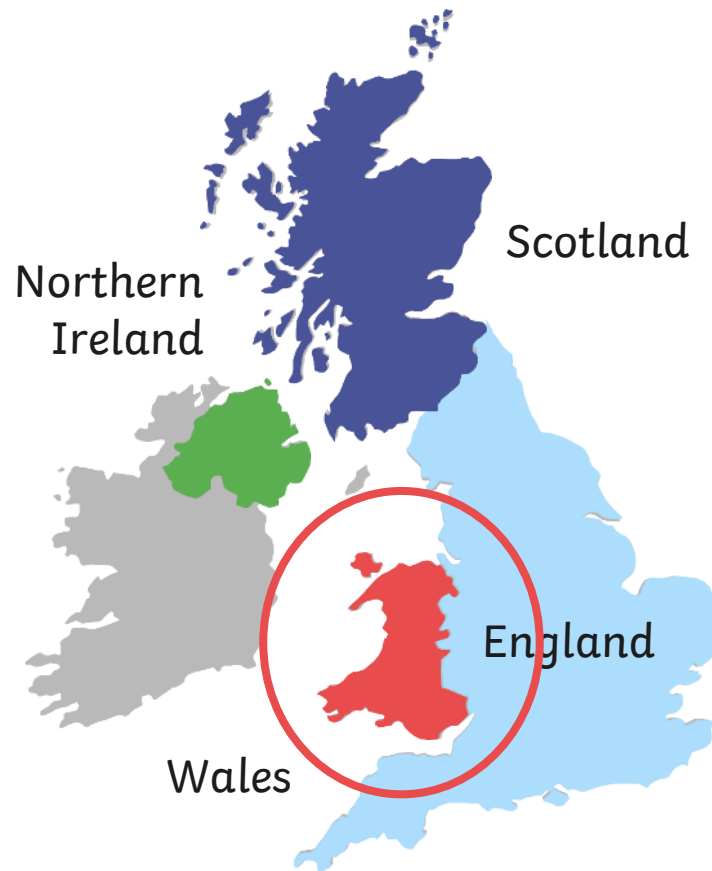
London Eye
Ferris wheel
allowing people
to see views
across the capital
city of London.



English Foods



Wales



Physical Features



Snowdon
The highest mountain in Wales at 1,085 metres above sea level.

Pistyll Rhaeadr
An 80 metre high waterfall.



Human Features



Conwy Castle

A medieval fortress in Conwy on the North Coast of Wales, built by Edward I.

The Principality Stadium

A national stadium of Wales located in the Welsh capital city of Cardiff.



Welsh Foods

Welsh Lamb



Welsh Coastline
Seaweed, Laver,
Cockles



Welsh Rarebit

Northern Ireland



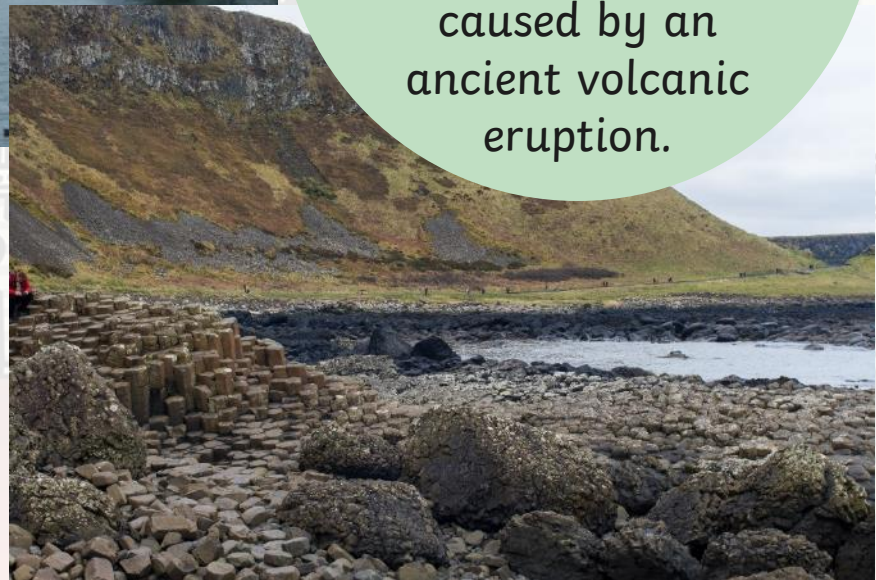
Physical Features



Lough Neagh
A freshwater lake, it is the largest lake in Northern Ireland.

Giant's Causeway

An area of about 40,000 interlocking basalt columns caused by an ancient volcanic eruption.



Human Features



Belfast Castle
Situated in
the capital
city of Belfast.

Carrick-a-Rede Rope Bridge

A famous rope
bridge; the bridge
links the mainland
to the tiny island
of Carrickarede.



Northern Ireland Foods

Irish Lobster



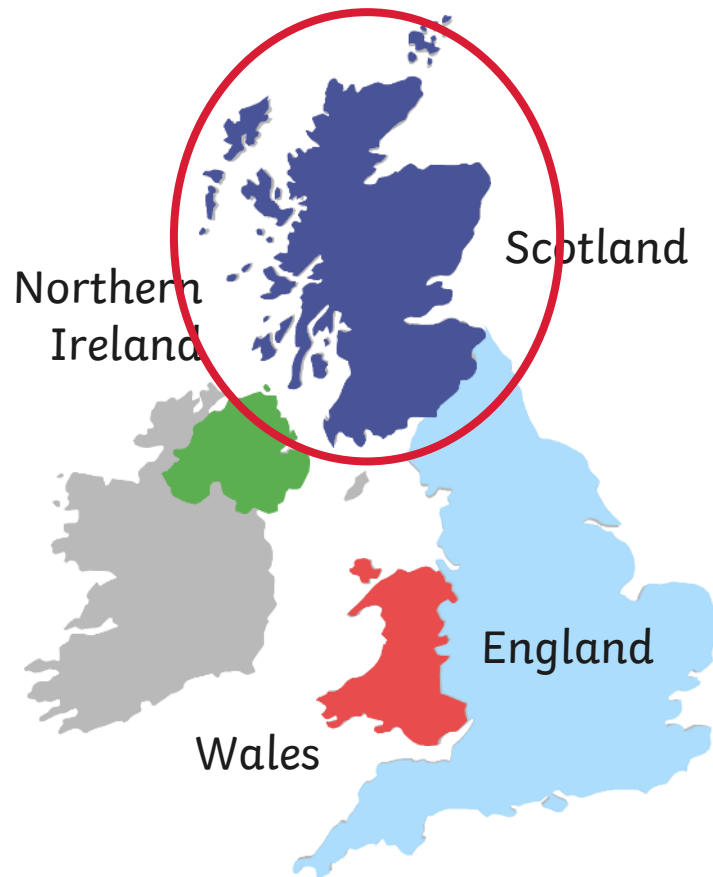
Dexter Beef



Soda bread



Scotland

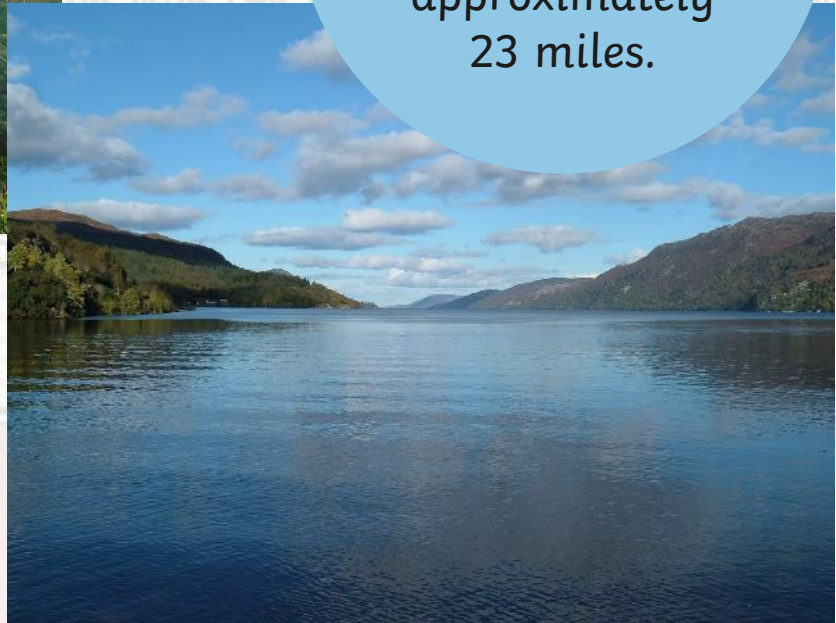


Physical Features



Ben Nevis
The highest mountain in the British Isles at 1,344 metres.

Loch Ness
A large, deep, freshwater loch extending for approximately 23 miles.



Human Features



Edinburgh Castle

A historic fortress in the capital city of Edinburgh.

Glasgow Cathedral
A place of worship.



Scottish Foods

Haggis



Scottish Highlands
Highland Cattle



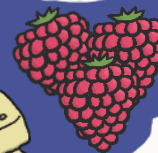
West Coast
Langoustines



Scottish
Shortbread



Scottish Lowlands
Whisky and
Raspberries



Weather and Climate

The United Kingdom is in the Northern Hemisphere above the Equator.

It is an island and surrounded by sea on all sides, this has an effect on the weather with a changeable climate from day to day.

Generally, the south is usually a little warmer than the north and the west wetter than the east.



Seasons in the UK

Spring: (March, April and May) rain showers, blossoming trees and flowering plants.

Summer: (June, July and August) is the warmest season, with long sunny days, occasional thunderstorms and sometimes heat waves.

Autumn: (September, October and November) can be mild and dry or wet and windy. Leaves begin to fall from the trees and the temperature becomes cooler.

Winter: (December, January and February) the coldest season, with freezing temperatures, icy conditions and sometimes snow.

Interesting Facts About The United Kingdom

- The English drink more tea than anywhere else in the world.
- Chickens outnumber humans in England.
- Windsor Castle is the largest royal home in the world.
- A past king called William the Conqueror ordered everyone to be in their beds by 8pm.
- The sports football, rugby and cricket were all created in the United Kingdom.



Activity

WALT: Identify Human and Physical characteristics of countries and cities in the United Kingdom (Geography)

Physical features

What is a physical feature of a place?

Examples of physical features

Human features

What is a human feature of a place?

Examples of human features



Country of the United Kingdom	Physical features	Human features	Other interesting facts



Plenary

- Share with your partner three new facts about the United Kingdom.
- How many countries are there in the UK?
- If you could go anywhere in the UK, where would you go and what would you do?

