

Key learning: To identify lines of symmetry within 2-D shapes

Do Now

Forwards and backwards



What two times tables facts do you know?



symmetry 2-D shapes reflection half exact identical



Key learning: To identify lines of symmetry within 2-D shapes

Star Words



symmetry

2-D shapes



reflection

half



exact



identical



symmetry 2-D shapes reflection half exact identical

Key learning: To identify lines of symmetry within 2-D shapes

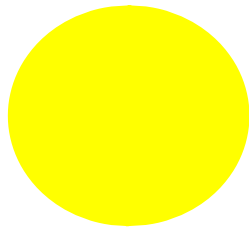
New Learning



symmetry 2-D shapes reflection half exact identical

Key learning: To identify lines of symmetry within 2-D shapes

New Learning



Line symmetry

What's on one side of the line matches what's on the other side.

How could we check?

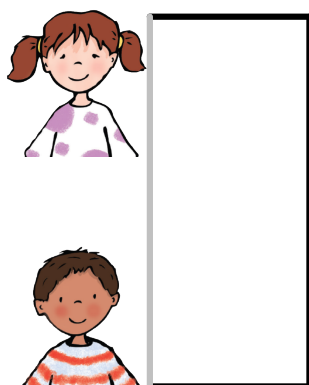


symmetry 2-D shapes reflection half exact identical

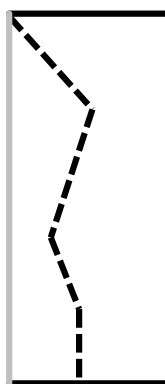
Key learning: To identify lines of symmetry within 2-D shapes

Talk Task

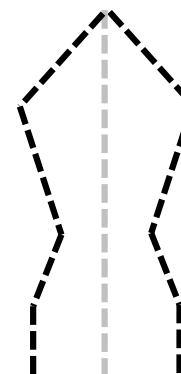
Pupil A and B: Cut different symmetrical shapes and discuss what is the same and what is different



1. Fold a piece of paper



2. Cut out a shape (without cutting across the fold).



3. Open the shape so that you can see the line of symmetry.

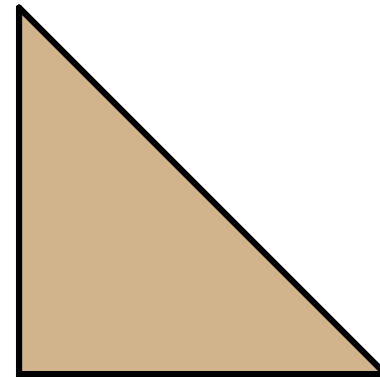
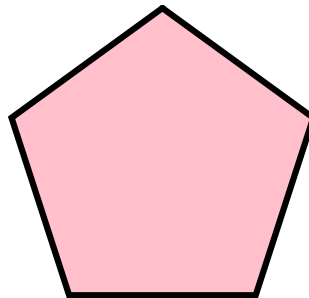
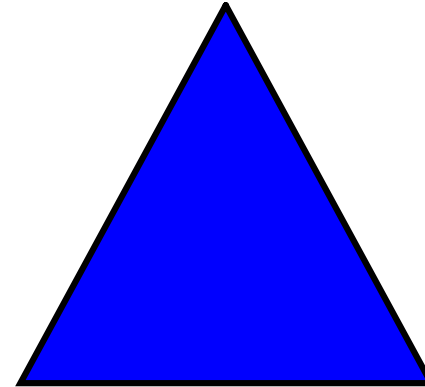
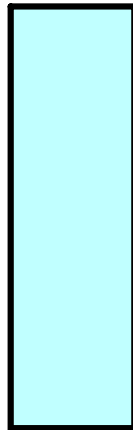
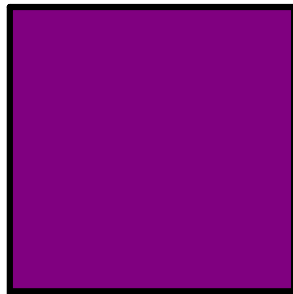


symmetry 2-D shapes reflection half exact identical

Key learning: To identify lines of symmetry within 2-D shapes

Develop Learning

What are these shapes line of symmetry?



Make ten
e.g. $8 + 3/4/5/6$



symmetry 2-D shapes reflection half exact identical

Key learning: To identify lines of symmetry

Independent Task

Name each shape.

Record the number of sides and vertices.

Explore and record the number of lines of symmetry.



5.3.20

WALT: identify lines of symmetry within 2D shapes.

Select a shape.

Count how many sides and vertices it has.

Fold it to find out how many lines of symmetry it has.

Complete the table. *Can you spot any patterns?*

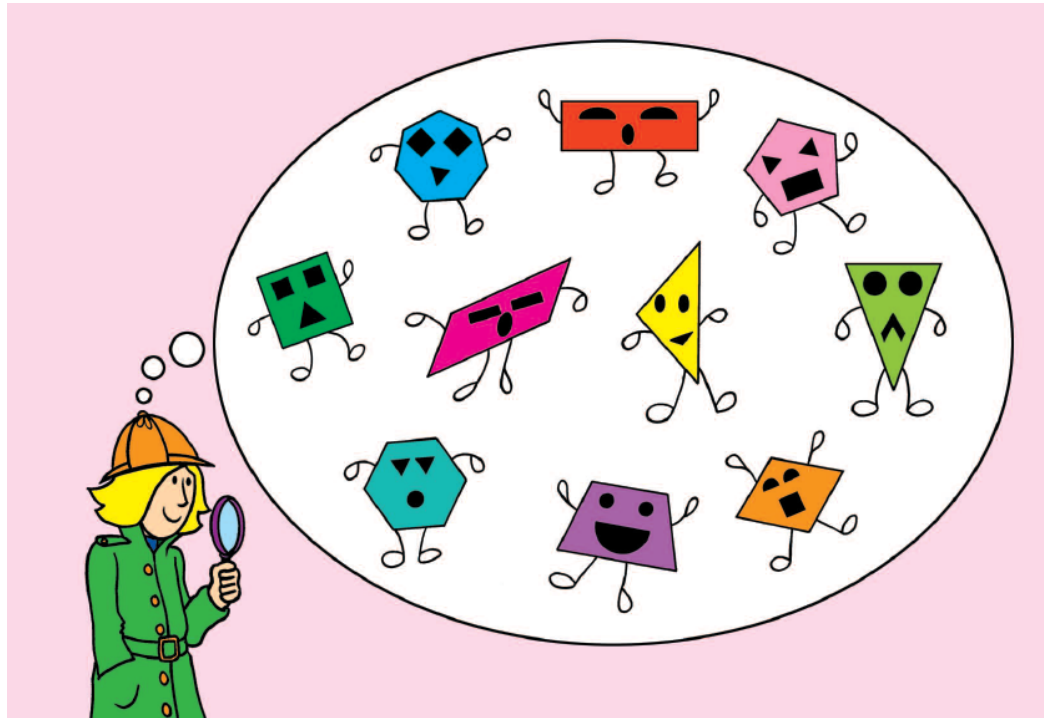
shape	number of sides	number of vertices	lines of symmetry



symmetry 2-D shapes reflection half exact identical

Key learning: To identify lines of symmetry within 2-D shapes

Plenary



Choose a shape and write down some clues to describe it. Then ask someone to work out which shape it is!



symmetry 2-D shapes reflection half exact identical

